



WaveLinx Wireless Connected Lighting System



Powering Business Worldwide



EAT•N

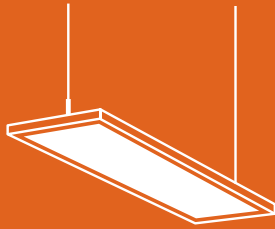
Powering Business Worldwide

WaveLinx Wireless Connected Lighting System



EATON POWER

Unparalleled knowledge of electrical power management



LIGHTING

Advanced LED fixtures



CONNECTIVITY

Communications & sensing technology

Physical devices & controllers

Edge computing



SOFTWARE

Software applications

Data accumulation & analysis

Take compliance, network security, and energy savings into your own hands

Automatic code compliance. Seven tiers of information security features. Integrated wireless sensors to collect and transmit key building data. And, the ability to control your system from a mobile app.

It's simple: WaveLinx just works.

Connected Lighting simplified by Eaton

Say goodbye to the high costs and complexity of typical addressable control systems

WaveLinX is designed for plug-and-play connectivity, for either stand-alone or building network applications.

Stand-Alone Installation:

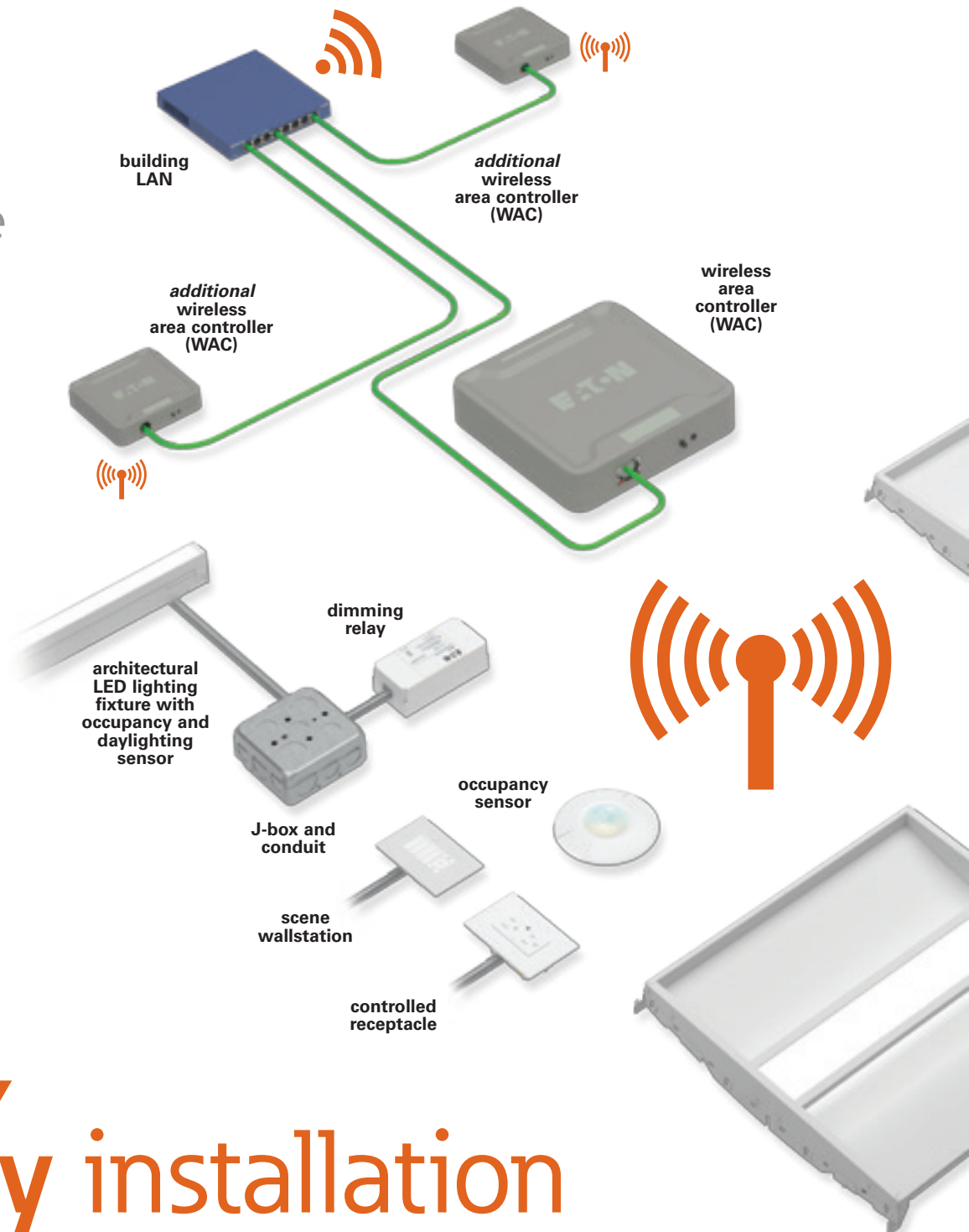
For smaller office spaces within a larger building.

- IT setup not required
- Scalable to join larger network
- Set up and manage the system via mobile app

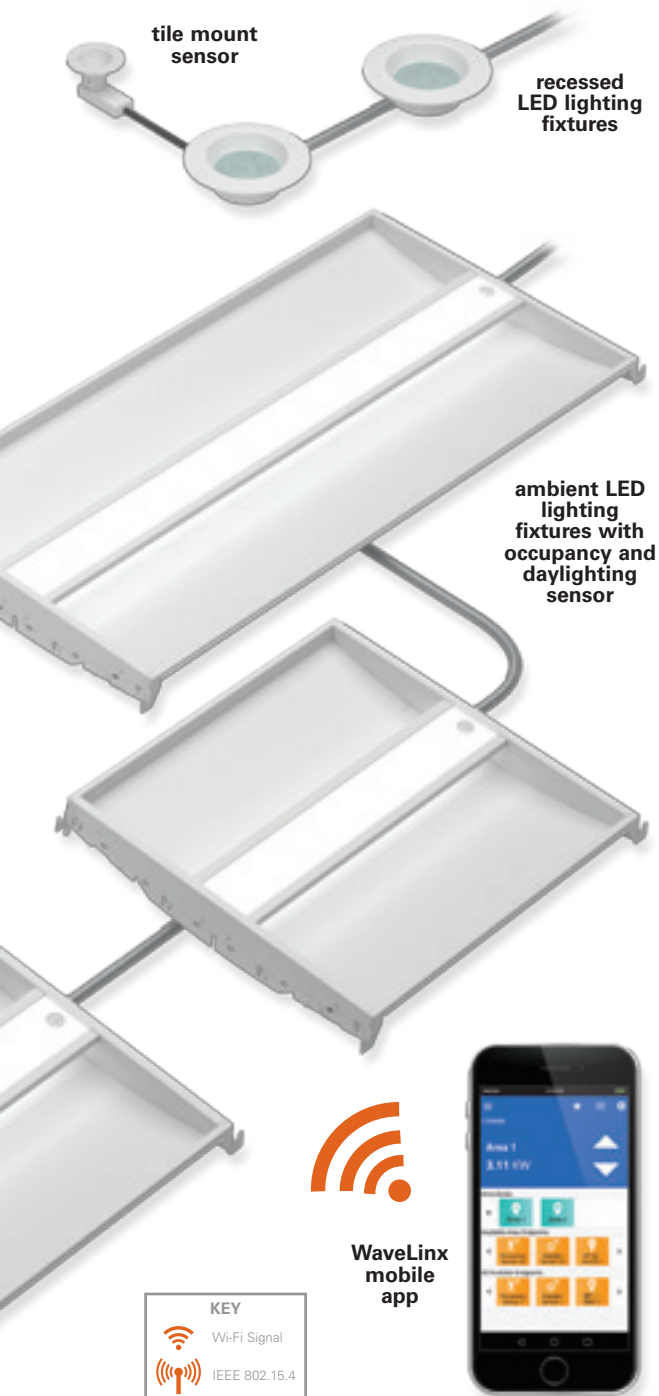
Network Installation:

For entire building connectivity.

- Smart building ready
- Simple configuration
- Security features for peace of mind



Flexible, turnkey installation



For many WaveLinX applications,

installation is so simple,

it's not even necessary to involve IT





Technology

Industry-leading technology, in a simple package

WaveLinx out-of-the-box functionality provides the fastest control confirmation on the market. It's also one of the easiest lighting systems to install and manage. WaveLinx is the designer and contractor choice for offices, medical buildings, educational facilities, and more.

Save on installation time and cost

WaveLinx is designed to get you up and running faster. In some cases, it's not even necessary to involve IT.

Reduce commissioning time

The commissioning process doesn't need to cause headaches or hang-ups. The WaveLinx built-in features reduce the time by 40% or more.

Collect key building data

Integrated sensors on the light fixtures gather real-time building data, so you can make more informed decisions and save energy.

Stay secure

The WaveLinx wireless system is equipped with unparalleled, 7-tier network security features.

Control it all, from your mobile device

View building stats and program multiple zone settings conveniently, with an easy-to-use mobile app.

Wireless, code-compliant, and cost-effective for today



**Lighting fixture
with integrated
sensor**

Highly efficient
LED fixtures



**Wireless Area
Controller**

Provides centralized
coordination of
multiple area control
options



**Wireless Wall
Station/
Receptacle**

Provides wireless
control of multiple
and local areas



**Mobile
Applications**

Provides personalized,
local control from a
tablet or smartphone



up to
70%
**ENERGY
SAVINGS**

ASHRAE 90.1 2016 - 70%
IECC 2015 - 55%
T24 2016 - 70%

WaveLinx reduces project
commissioning time by

40%
or more

*The system is
factory wired and
ready to meet code
out-of-the-box*

Automatic code compliance? Yes, it's true

No more waiting weeks for commissioning teams, code compliance hang-ups or missed opportunity costs. With WaveLinx, you can finish the job more quickly, and move on to the next.

- Automatic code commissioning meets or exceeds code requirements
- Wireless integrated sensors ensure maximum efficiency
- A simple mobile app allows building managers to easily adjust settings, even after the project has finished, with no need to go back into the wall
- Connected fixtures provide a platform for future scalability



LEDs on double-duty

With IoT technology, your lights are more than lights – they're a gold mine for building information.

Make better decisions with real-time, actionable data.

View key building information and optimize your zone settings, all from the mobile app:

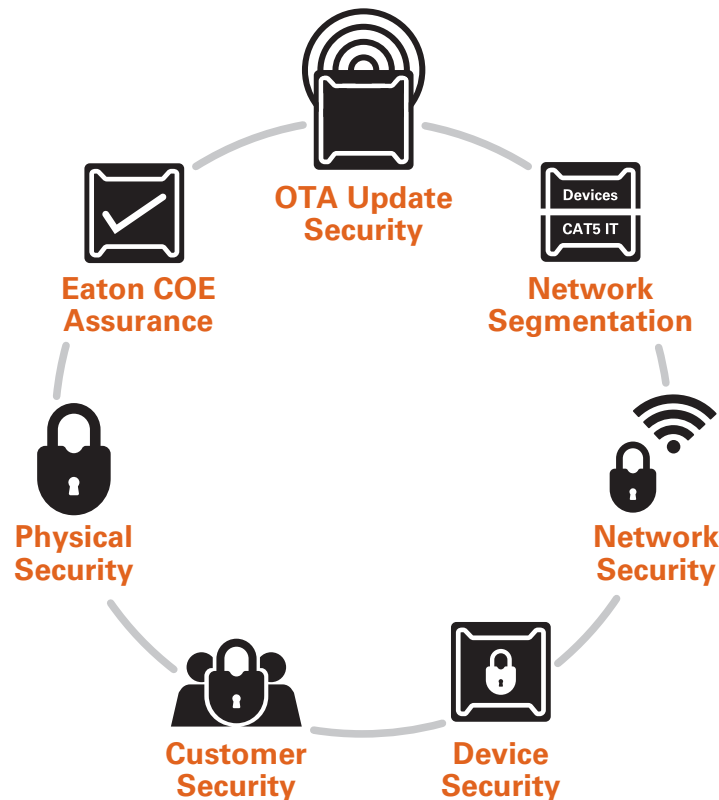
- Occupancy/vacancy control lets you fine tune occupied light level and partial ON/OFF requirements
- Closed loop daylighting helps you harness your space's natural light, and meet code requirements
- Multicolor LED status lights allow for easy system troubleshooting and diagnostics



Imagine if your lighting system helped you get off the job faster with controls and lighting that just work

Multi-tiered security for ultimate peace of mind

With information security threats and fears on the rise, WaveLinx is designed to keep your data on lockdown with seven tiers of security.





Physical Security

Physical barriers to entry

The WaveLinx server sits in the ceiling, and hidden from view



Customer Security

Customer security

NIST Cybersecurity Framework and industry best practices



Device Security

Device security

Features 128-bit encryption device-to-device communication



Network Security

Network security

Secure HTTPS protocols and WPA2 technology



Network Segmentation

Network segmentation

Isolated targets mean much smaller potential for large scale breaches



OTA Update Security

Over-the-air updates

Wireless technology allows your system to securely stay up-to-date



Eaton COE Assurance

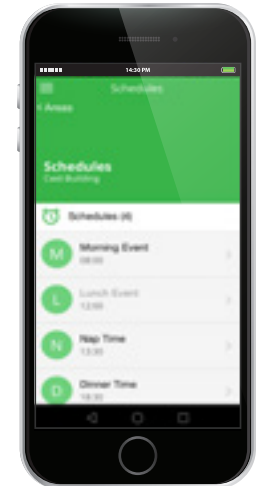
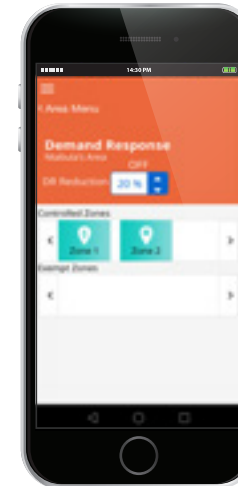
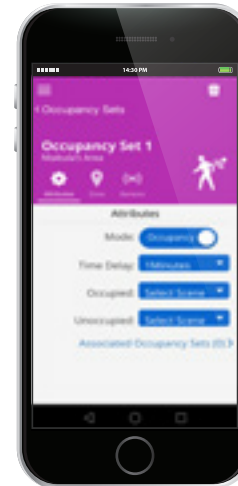
Eaton COE assurance

Continuous monitoring and reporting of internet threats and vulnerabilities

Control and efficiency, at your fingertips

Next-level convenience and control: configure zones, customize settings, and save energy from one secure mobile app.

- Easy, automatic code commissioning provides a sequence of operations that meets the strictest codes
- Adjust automatic settings, with the ability to configure each setting yourself
- View occupancy/daylight data from sensors, and implement demand response to save money



WaveLinx
mobile app
settings



Manual
Dimmer



Occupancy
Sensor



Lumen Maintenance
Control



Daylighting
Control



Receptacle
Control



Tuning
Control



Scheduling



Manually Switched
ON/OFF



Demand
Response



Control devices

Precise control.
Wireless communication.



Wireless Area Controller

The Wireless Area Controller (WAC-POE) is the main component of the Eaton WaveLinx Wireless Connected Lighting System. The WAC coordinates between the WaveLinx Mobile App and various WaveLinx devices to create a smart building ecosystem that provides out of the box functionality and leverages our patent pending automatic code commissioning features.



Integrated Sensor

Sensing | Daylight | Wireless

The integrated sensor combines control within the light fixtures to reduce installation and design time; while meeting energy codes. With the integrated sensor the lighting design is the control design.



Wireless Ceiling Sensor

The room based wireless sensor offers PIR occupancy sensing of up to 1500 square feet. The room based sensor is battery powered and is one of the smallest ceiling mounted room based wireless occupancy sensors on the market. The sensor in combination with the WaveLinX mobile application allows you to gain considerable energy savings from occupancy sensing-based control of lighting and plug loads.



Wireless Wallstation

The wireless wallstation is available in several small and large button configurations as well as various colors. These wallstations are mains powered and provide wireless control of the lighting in each area. The wireless wallstation mounts in a standard wallbox and includes a decorator style color matching wallplate. Each wallstation is fully configurable to provide local and multi-level control in each area.



Wireless Relay Switchpack

The Wireless Relay switchpack with 0-10V (WSP-MV-010) offers 120-277VAC 20amp zero crossing relay control and continuous 0-10V dimming control of LED and non LED loads. The wireless relay switchpack with 0-10V control also supports 20amp plug load control.



Wireless Receptacle


The wireless receptacle provides simplified wireless plug load control. Plug load control is required now in many building codes as part of an energy saving control strategy. The wireless receptacle is automatically paired with all WaveLinX occupancy sensors in a space when it is assigned to an area using the WaveLinX Mobile Application.

Lighting products

Eaton's WCL technology offers an intelligent, simple, easily control of various luminaires to meet application requirements:

- Supports integrated or tile mount connected sensors for occupancy and daylighting
- Designed and tested by Eaton to provide guaranteed compatibility
- Eliminate the worry of controls and luminaire integration

Architectural lighting



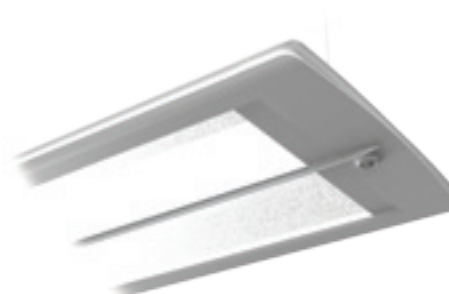
**Corelite
Iridium**
Linear suspended
WaveStream LED

For a complete list of
compatible products, see:
www.eaton.com/WaveLinx

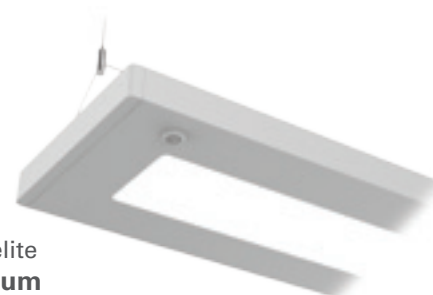
www.eaton.com/WaveLinx



**RSA
MRZ**
Architectural recessed
integral LED



**Corelite
Divide**
Suspended
WaveStream LED



**Corelite
Jaylum**
Suspended LED



**Corelite
Bridge**
Architectural recessed
WaveStream LED



Ambient lighting



**Metalux
WSL**
Linear surface /
suspended series
WaveStream LED



**Metalux
SkyRidge**
Recessed ambient
WaveStream LED



**Metalux
Encounter**
Recessed ambient
WaveStream LED



**Metalux
Cruze**
LED recessed
ambient



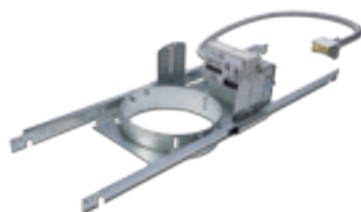
**Metalux
Arcline**
Architectural
recessed ambient



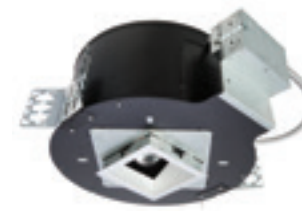
**Metalux
FR**
LED recessed
ambient



Recessed lighting



**Halo
PD6**
LED recessed
downlight



**Portfolio
LDSQA4A**
LED square adjustable
accent/slope

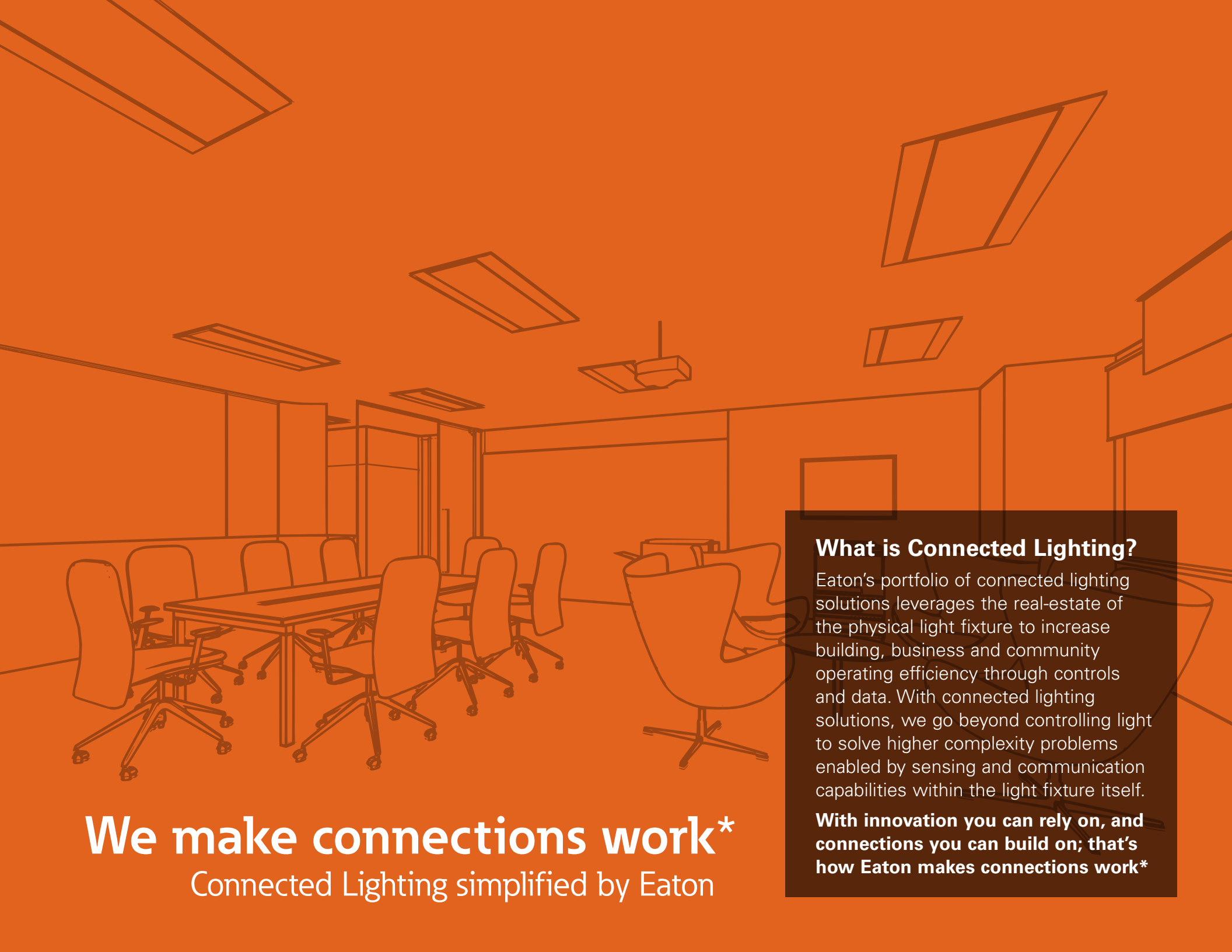


**Portfolio
LD4A and LDSQ4A**
Round and square
recessed downlight

Get started.

Eliminate the cost and complexity of typical addressable control system commissioning and benefit from a flexible reconfigurable wireless topology with WaveLinx.





We make connections work*
Connected Lighting simplified by Eaton

What is Connected Lighting?

Eaton's portfolio of connected lighting solutions leverages the real-estate of the physical light fixture to increase building, business and community operating efficiency through controls and data. With connected lighting solutions, we go beyond controlling light to solve higher complexity problems enabled by sensing and communication capabilities within the light fixture itself.

With innovation you can rely on, and connections you can build on; that's how Eaton makes connections work*

Lighting Product Lines

Halo
Halo Commercial
Portfolio
Iris
RSA
Metalux
Corelite
Neo-Ray
Fail-Safe
MWS
Ametrix
Shaper
io
Lumark
McGraw-Edison
Invue
Ephesus
Lumière
Streetworks
AtLite
Sure-Lites

Controls Product Lines

Greengate
iLumin
Zero 88
Fifth Light Technology
iLight (International Only)

Connected Lighting Systems

LumaWatt Pro
WaveLinx
Distributed Low-Voltage Power
ConnectWorks



Eaton
1121 Highway 74 South
Peachtree City, GA 30269
P: 770-486-4800
www.eaton.com/lighting

Canada Sales
5925 McLaughlin Road
Mississauga, Ontario L5R 1B8
P: 905-501-3000
F: 905-501-3172

© 2017 Eaton
All Rights Reserved
Printed in USA
Publication No. BR503009EN
May 2017

Eaton is a registered trademark.

All other trademarks are property of their respective owners.

Product availability, specifications, and compliances are subject to change without notice.